

3730 Sheridan Drive

Medical, Office or Retail Property

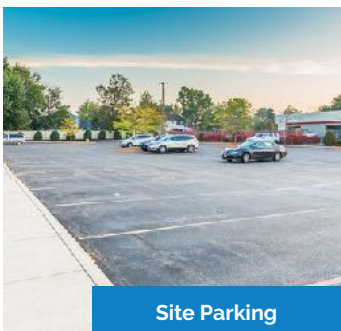
3730 Sheridan Drive, Amherst, NY 14226



Landscaping



Looking West



Site Parking



NOW LEASING

MAIN ENTRANCE

OVERVIEW:

- Sheridan near Millersport
- Plenty of parking
- Build-to-suit or move-in ready for a medical tenant

DESCRIPTION:

3730 Sheridan Drive sits nicely between Millersport Highway and Harlem Road. Surrounded by popular furniture retailers, medical offices and several other established and emerging retail businesses. Tenants have access to a 76 car parking lot with plenty of landscaping in this great suburban location. Call for a tour today.



MAIN OFFICE:

501 John James Audubon Pkwy
Ste. 400
Amherst, NY 14228

For more information or to schedule a tour call:

John McDonald – Leasing Manager

716.874.4880

Suite 105

3730 Sheridan Drive

AMHERST, NY 14226

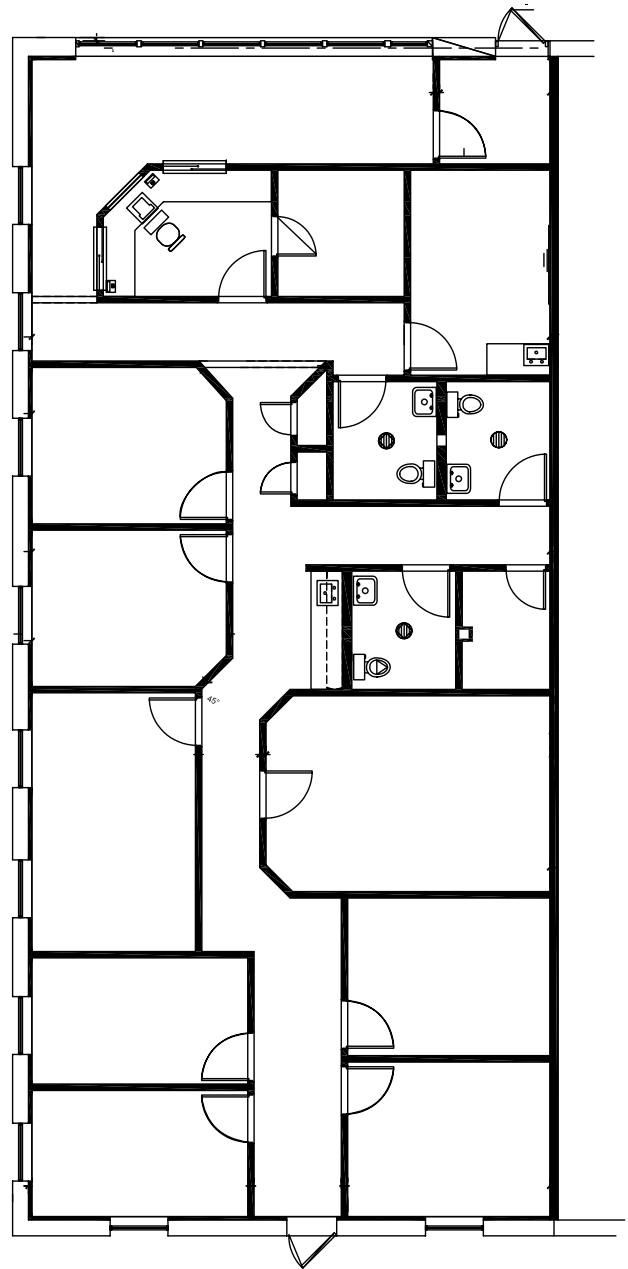
2,609 s.f.

FLOORPLAN OVERVIEW

OVERVIEW:

- Sheridan near Millersport
- Plenty of parking
- Build-to-suit or move-in ready for an established medical tenant

ENTRANCE



MAIN OFFICE:
501 John James Audubon Pkwy
Ste. 400
Amherst, NY 14228

For more information or to schedule a tour call:
John McDonald – Leasing Manager

716.874.4880