

1231 DELAWARE AVENUE

Office Space Available

1231 Delaware Avenue, Buffalo, NY 14209



Building Entrances



Building Parking



View From Delaware



NOW LEASING

Primary Building Entrance

OVERVIEW:

- Delaware Avenue
- Private Entrances
- Near Gates Circle and Elmwood Village
- Close to Downtown

DESCRIPTION:

Charming brick office building in treed, park like setting. Convenient location on Delaware Avenue near West Ferry with on site parking. The building's many windows offer abundant natural light. On site parking is available. Call today for a tour!



MAIN OFFICE:
501 John James Audubon Pkwy
Ste. 400
Amherst, NY 14228

For more Information or to schedule a tour call:
John McDonald – Leasing Manager

716.874.4880

SUITE 011

1231 Delaware Avenue, Buffalo, NY 14209

Currently available for lease

681 s.f.

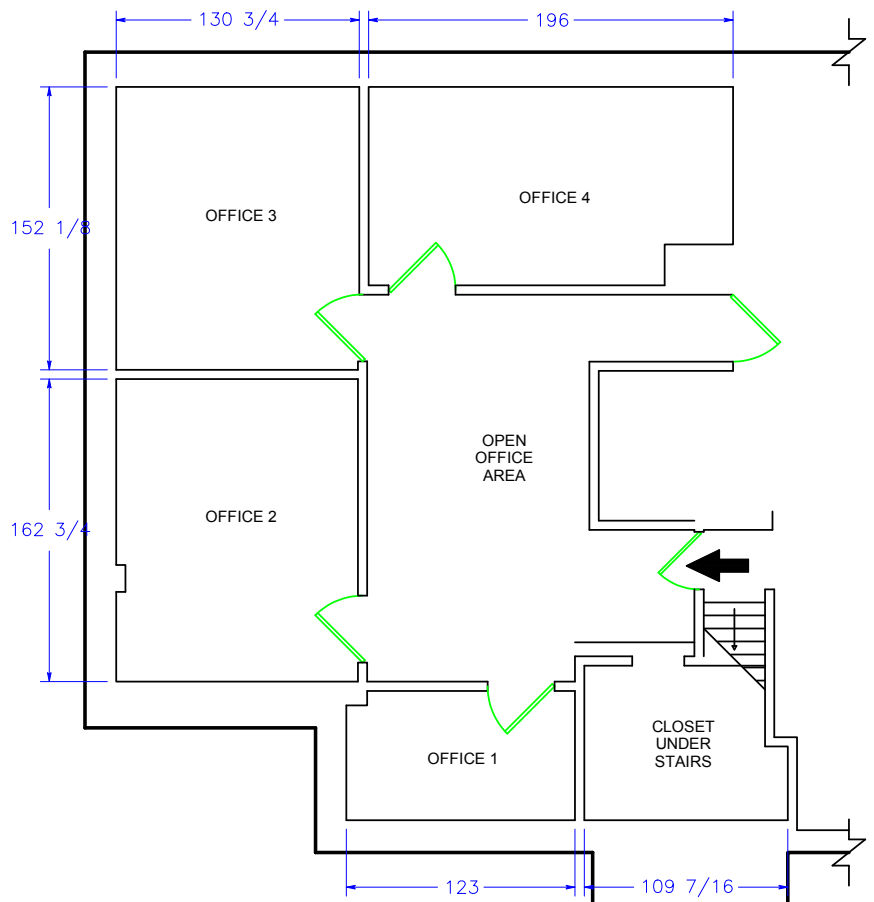
OVERVIEW:

- Lower Level
- Private
- Configured for office use
- Private Bathroom
- Close to all things Downtown

SUITE INTERIOR:



FLOORPLAN OVERVIEW



MAIN OFFICE:
501 John James Audubon Pkwy
Ste. 400
Amherst, NY 14228

For more information or to schedule a tour call:
John McDonald – Leasing Manager

716.874.4880