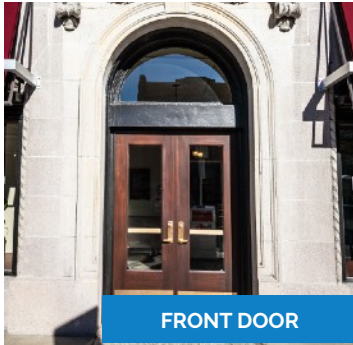


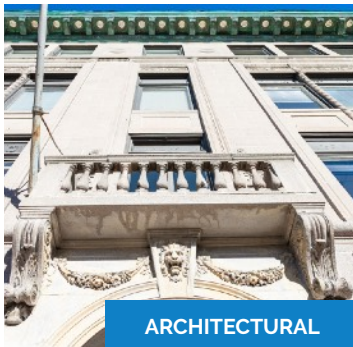
374 DELAWARE AVENUE

Office Space Available

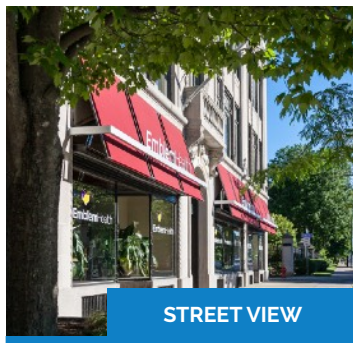
374 Delaware Avenue, Buffalo, NY 14202



FRONT DOOR



ARCHITECTURAL



STREET VIEW



NOW LEASING

VIEW FROM DELAWARE

OVERVIEW:

- Historic Building
- Near Allentown
- Utilities included
- Private and Street parking
- Close to the 33

DESCRIPTION:

Historically significant in the architectural chronicles of Delaware Avenue, the Huyler Building (also known as the Pitt Petri building) stands tall among the great buildings in the city of Buffalo. Designed in 1926 by famed architect Harvey Horton, it was originally to be used by Huyler's Confectionery and Chocolates Company. It's proud and dignified exterior matches the surrounding neighborhood's splendor while providing outstanding and affordable office space for the professional desiring a presence near downtown. Suitably situated near many amenities such as courthouses, theaters and restaurants, tenants are conveniently located near services for everyday business and personal needs.



MAIN OFFICE:
501 John James Audubon Pkwy
Ste. 400
Amherst, NY 14228

For more information or to schedule a tour call:
John McDonald – Leasing Manager

716.874.4880

SUITE 101

374 Delaware Avenue, Buffalo, NY 14202

Currently available for lease

3,887 s.f.

OVERVIEW:

- Fully-Remodeled Office Space
- Move-In Ready
- Delaware Avenue, Near Tupper

INTERIOR SUITE PHOTOS:



FLOORPLAN OVERVIEW



MAIN OFFICE:
501 John James Audubon Pkwy
Ste. 400
Amherst, NY 14228

For more Information or to schedule a tour call:
John McDonald – Leasing Manager

716.874.4880