

PARK VIEW CENTRE

Office Space Available

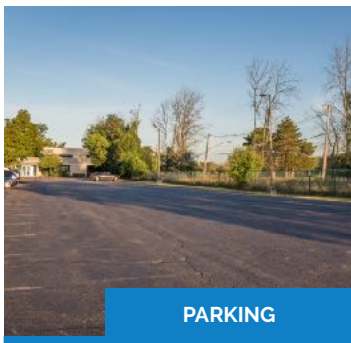
1340 North Forest, Williamsville, NY 14221



STREET VIEW



MONUMENT SIGN



PARKING



1340 N. Forest Rd. Suite 107

OVERVIEW:

- Plenty of parking
- Park-like setting
- Near UB North Campus
- Easy Access to I-990
- Easy Access to I-290
- Space Available

DESCRIPTION:

Situated near the busy intersection of North Forest Rd. and Maple Dr. in Amherst, NY, this collection of contemporary buildings consists of a combination of medical, retail, entertainment and dining. An abundance of parking makes visiting and working here hassle free. Quick access to the I-290 and available units ranging from 1,200 SF to 6,000 SF makes this work campus a desirable location for any business.



MAIN OFFICE:

501 John James Audubon Pkwy
Ste. 400
Amherst, NY 14228

For more information or to schedule a tour call:

John McDonald – Leasing Manager

716.874.4880

SUITE 107

1340 North Forest, Williamsville, NY 14221

Currently available for lease

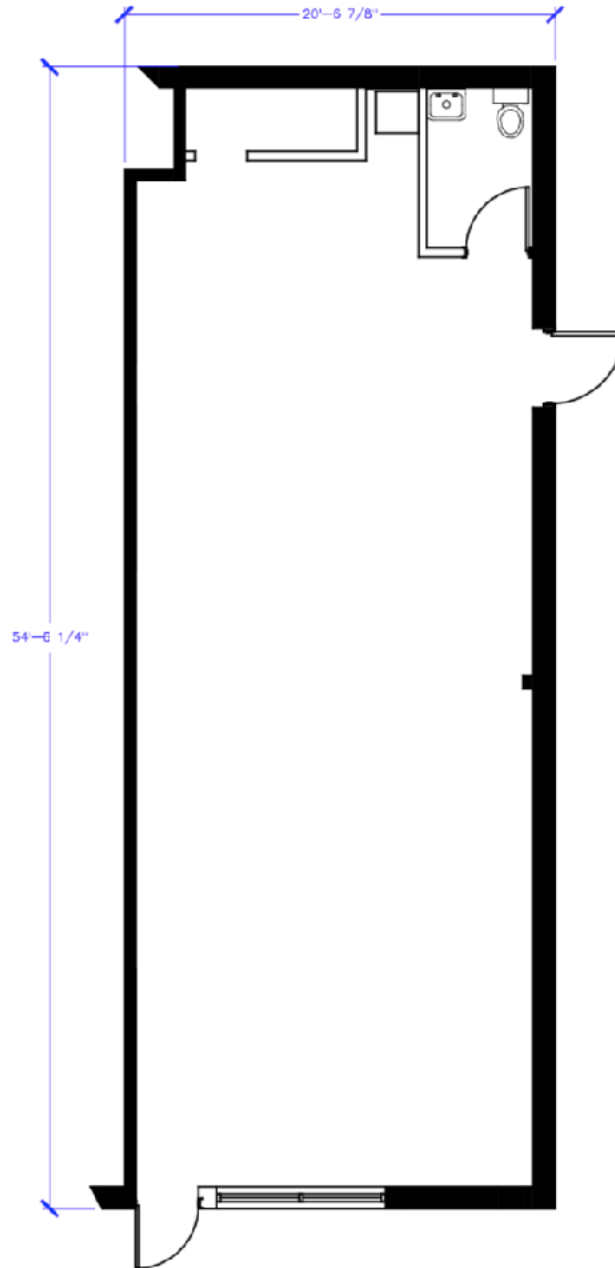
1,107 s.f.

FLOORPLAN OVERVIEW

OVERVIEW:

- Private entrance
- Plenty of parking
- Open floorpan
- Build-to-suit available

INTERIOR:



MAIN OFFICE:
501 John James Audubon Pkwy
Ste. 400
Amherst, NY 14228

For more information or to schedule a tour call:
John McDonald – Leasing Manager

716.874.4880