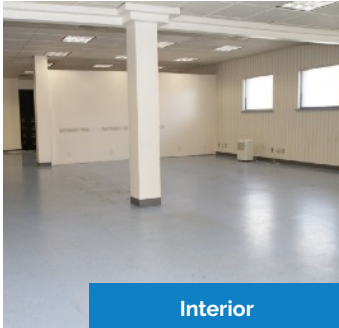


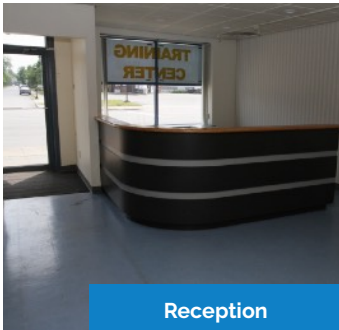
2558 Delaware Avenue

MIXED USE COMMERCIAL PROPERTY

BUFFALO, NY 14216



Interior



Reception



First Floor



FOR LEASE

MAIN ENTRANCE

OVERVIEW:

- Freestanding
- Delaware Ave Exposure
- Two Floors
- Close to amenities

DESCRIPTION:

This freestanding commercial building is in a prime location with great exposure. Situated on the southwest corner of Delaware and Avery in an area that has been the site of major economic redevelopment over the past few years. Call today to arrange a tour!



MAIN OFFICE:
501 John James Audubon Pkwy
Ste. 400
Amherst, NY 14228

For more Information or to schedule a tour call:
John McDonald – Leasing Manager

716.874.4880

Suite 101

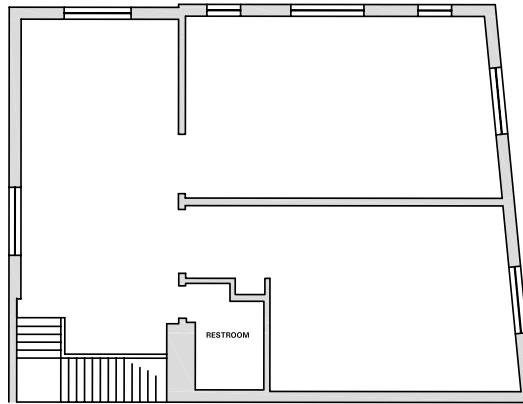
2558 Delaware Avenue

BUFFALO, NY 14216

4,000 SF

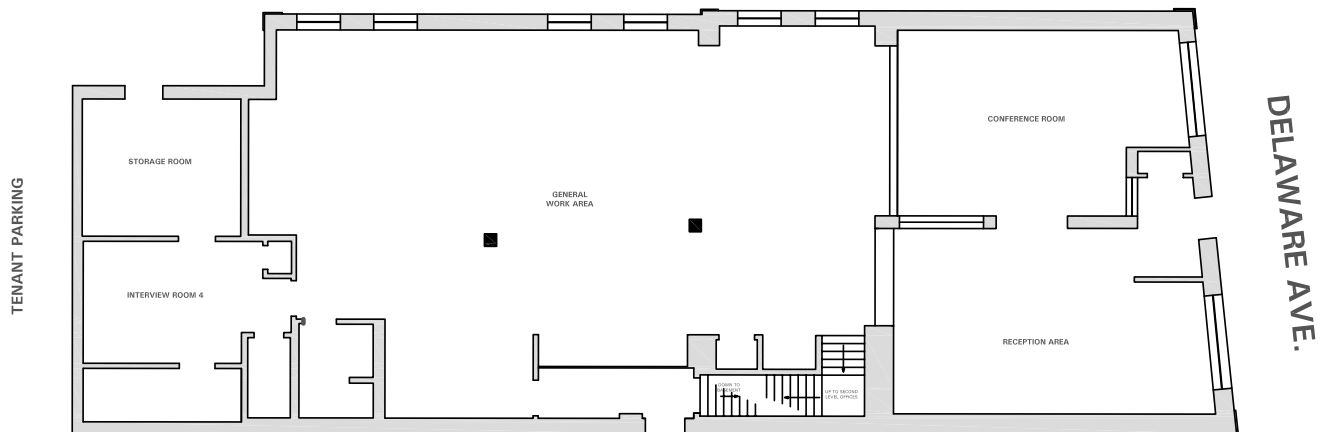
OVERVIEW:

- Two Floors
- Highly Visible
- Build-to-suit
- Freestanding



SECOND FLOOR SPACEPLAN
-NO SCALE

AVERY



FIRST FLOOR SPACEPLAN
-NO SCALE

INDICATES EXISTING WALL



MAIN OFFICE:
501 John James Audubon Pkwy
Ste. 400
Amherst, NY 14228

For more information or to schedule a tour call:
John McDonald – Leasing Manager

716.874.4880