

# 100 SYLVAN PARKWAY

Office Space Available

100 Sylvan Parkway, Amherst, NY 14228



## OVERVIEW:

- Plenty of parking
- Park-like setting
- Near UB North Campus
- Easy Access to I-990
- Easy Access to I-290
- Space Available

## DESCRIPTION:

Nestled into the serene landscape of Millersport Hwy, Audubon Parkway and North Forest area, 100 Sylvan Parkway becomes Plaza Group's newest addition to its portfolio as of June 2018. The building offers an abundant amount of parking, a modern business facility, nearby amenities including restaurants, easy access to I-990, I-290, University at Buffalo, and others. 100 Sylvan currently houses four professional tenants with room for more. Suite #500 is 2,900 SF of Class A office space in rental ready condition. If not perfect for you, we can make it so it is. Contact us today.



### MAIN OFFICE:

501 John James Audubon Pkwy  
Ste. 400  
Amherst, NY 14228

For more information or to schedule a tour call:

John McDonald – Leasing Manager

**716.874.4880**

# SUITE 500

100 Sylvan Parkway, Amherst, NY 14228

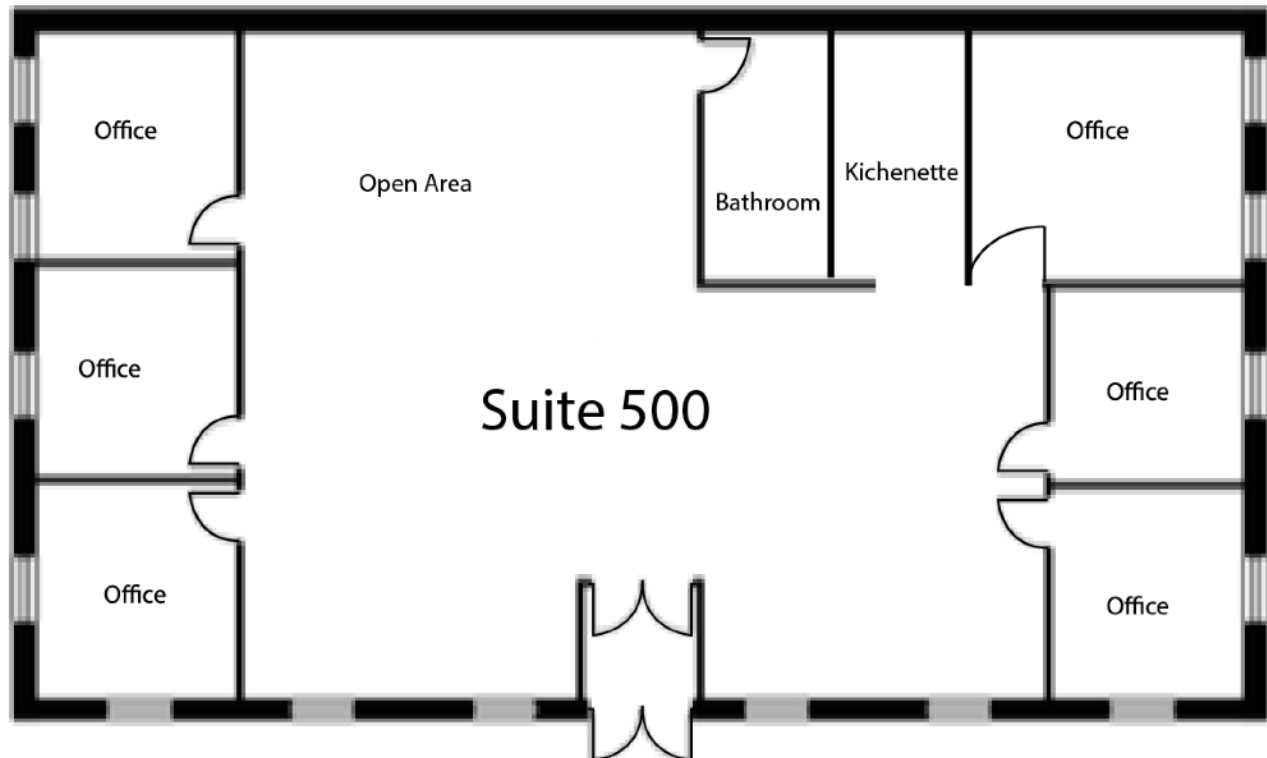
Currently available for lease

## 2,900 s.f.

### OVERVIEW:

- Private entrance
- Plenty of parking
- Medical/Office

### FLOORPLAN OVERVIEW



**MAIN OFFICE:**  
501 John James Audubon Pkwy  
Ste. 400  
Amherst, NY 14228

**For more information or to schedule a tour call:**  
John McDonald – Leasing Manager

**716.874.4880**