

2625 Delaware Avenue

MIXED USE COMMERCIAL PROPERTY

BUFFALO, NY 14216



Storefront



Storefront



New Facade



NOW LEASING

MAIN ENTRANCE

OVERVIEW:

- Renovated Facade
- Plenty of parking
- Highly Visible
- Build-to-suit

DESCRIPTION:

Beautiful plaza with lots of parking. Join national tenants in one of North Buffalo's up and coming areas. Tenants include: Weight Watchers, Quest Diagnostics, Amherst Therapy, Metro Mattress, People Inc and more! Call today to arrange a tour!



MAIN OFFICE:

501 John James Audubon Pkwy
Ste. 400
Amherst, NY 14228

For more Information or to schedule a tour call:

John McDonald – Leasing Manager

716.874.4880

Suite 104 - 3,562 s.f.

2625 Delaware Avenue

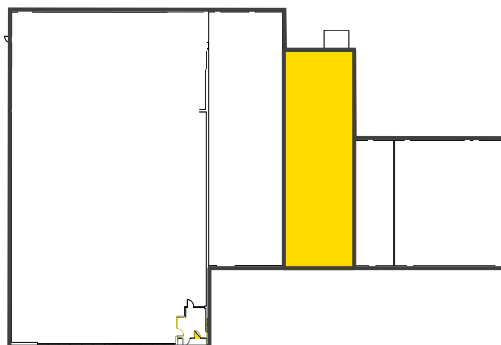
BUFFALO, NY 14216



3,562 SF

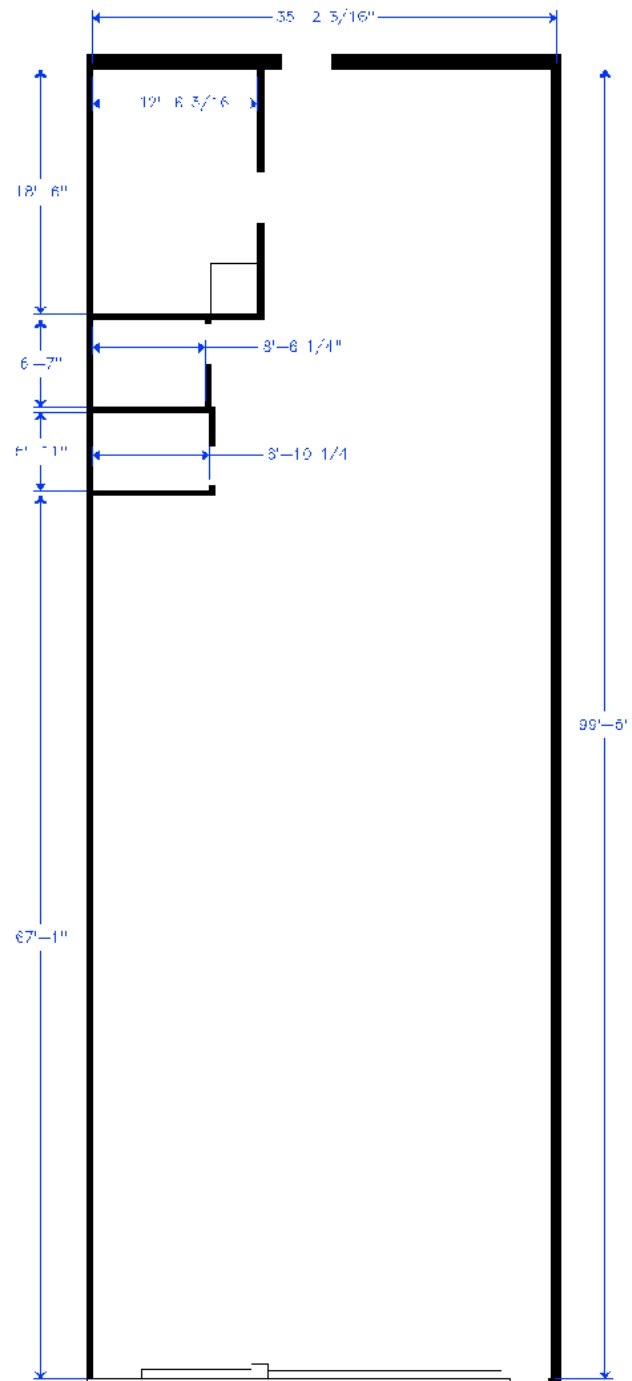
OVERVIEW:

- Renovated Facade
- Plenty of parking
- Highly Visible
- Build-to-suit

BUILDING OVERVIEW



 Available  Leased



MAIN OFFICE:
501 John James Audubon Pkwy
Ste. 400
Amherst, NY 14228

For more information or to schedule a tour call:
John McDonald – Leasing Manager

716.874.4880