

374 Delaware Avenue

Office Space Available

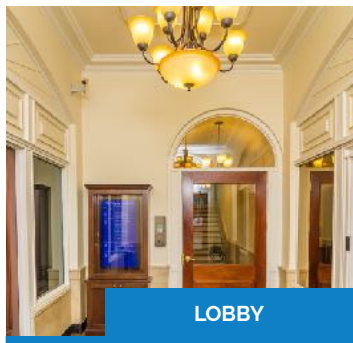
374 Delaware Avenue, Buffalo, NY 14202



BUILDING FRONT



ARCHITECTURE



LOBBY



NOW LEASING

DELAWARE AVENUE VIEW

OVERVIEW:

- Professional building
- Central business district
- 1/4 mile from downtown
- Easy Access to I-190
- Medical campus nearby
- Historical building

DESCRIPTION:

Historically significant in the architectural chronicles of Delaware Avenue, the Huyler Building (also known as the Pitt Petri building) stands tall among the great buildings in the city of Buffalo. Designed in 1926 by famed architect Harvey Horton, it was originally to be used by Huyler's Confectionery and Chocolates Company. It's proud and dignified exterior matches the surrounding neighborhood's splendor while providing outstanding and affordable office space for the professional desiring a presence near downtown. Suitably situated near many amenities such as courthouses, theaters and restaurants, tenants are conveniently located near services for everyday business and personal needs.



MAIN OFFICE:
501 John James Audubon Pkwy
Ste. 400
Amherst, NY 14228

For more information or to schedule a tour call:
John McDonald – Leasing Manager

716.874.4880

SUITE 306

374 Delaware Avenue, Buffalo NY 14202

Currently available for lease

640 s.f.

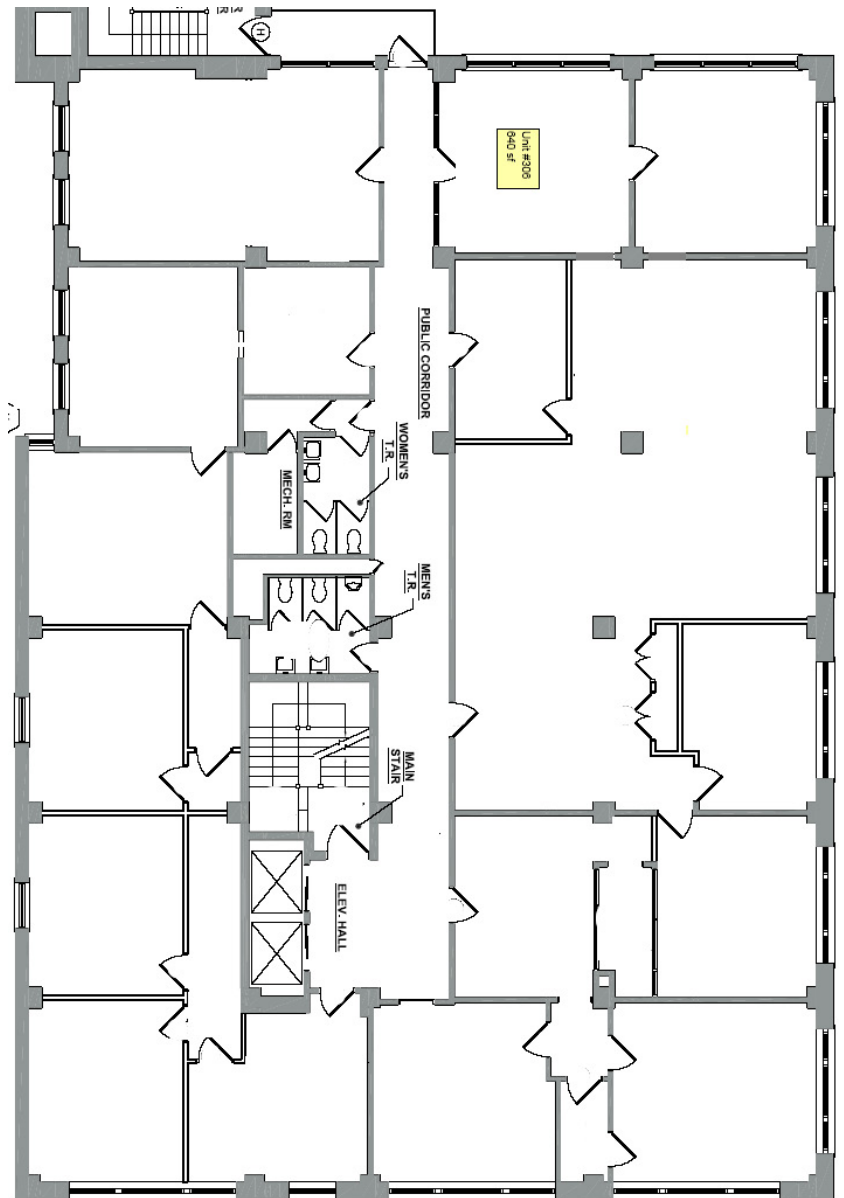
OVERVIEW:

- 2 separate rooms
- Private entrance
- Updated carpet & lighting
- Move-In-Ready
- Large windows

SUITE IMAGES:



FLOORPLAN:



MAIN OFFICE:
501 John James Audubon Pkwy
Ste. 400
Amherst, NY 14228

For more Information or to schedule a tour call:
John McDonald – Leasing Manager

716.874.4880